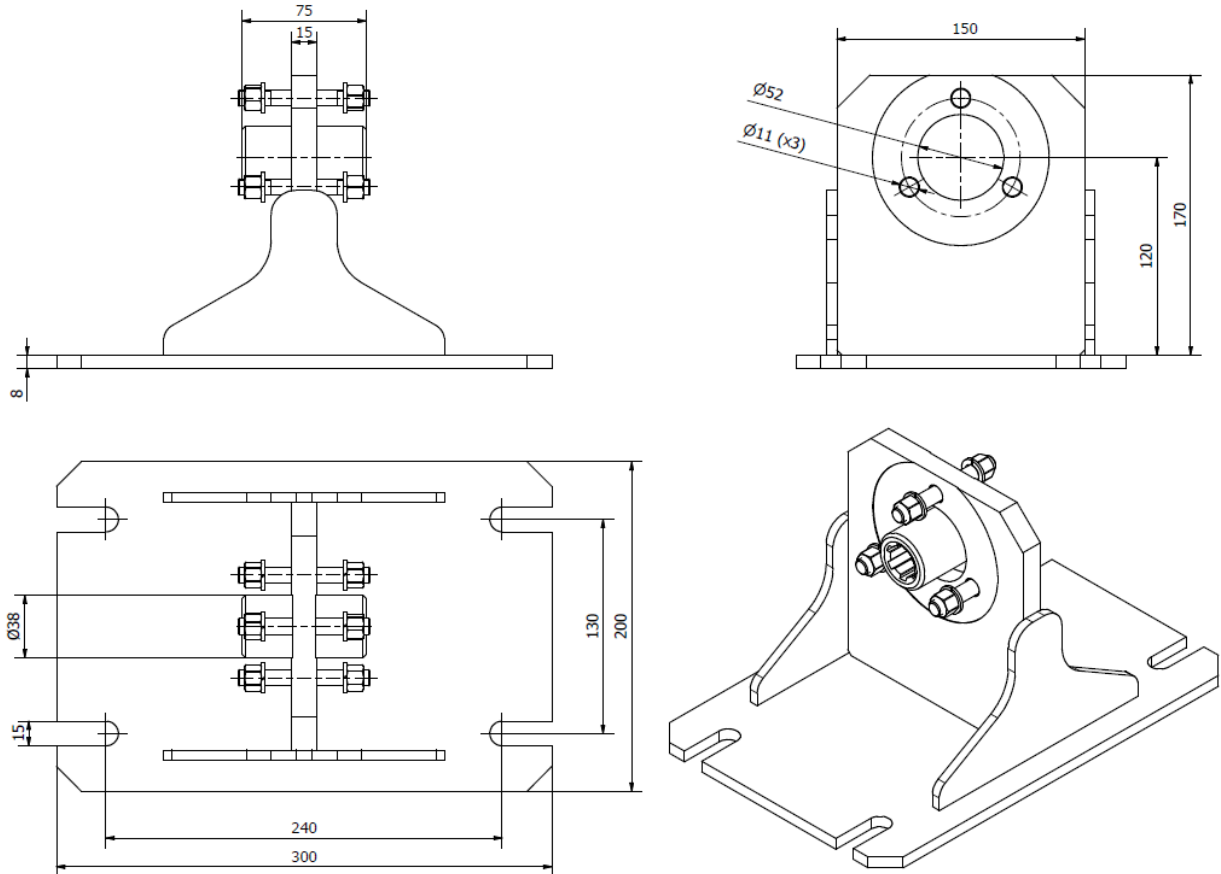


**Main Dimensions**



**(Dimensions in mm)**

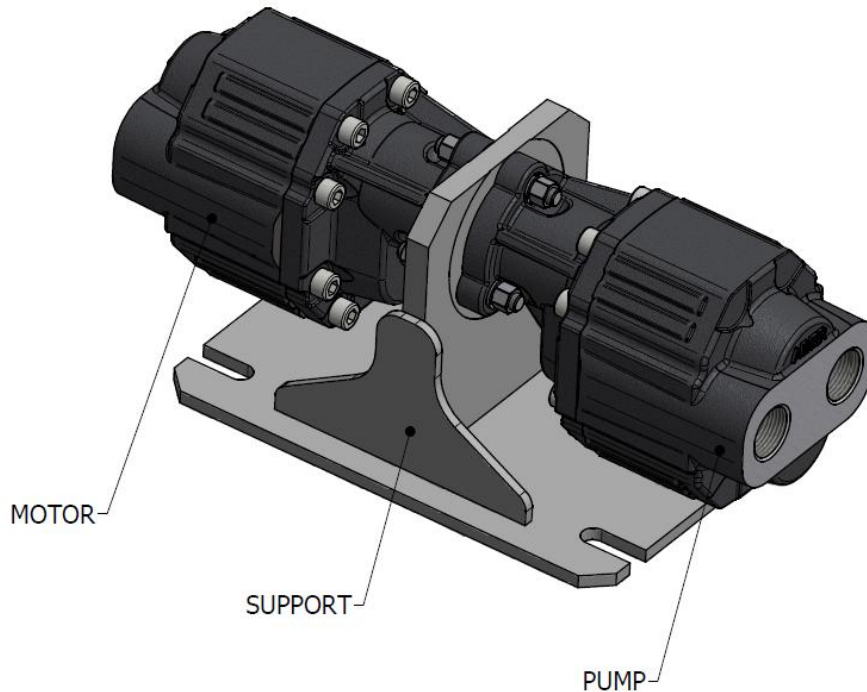
**SUPPORT MOTOR - PUMP DIN5463 (UNI) characteristics:**

- SUPPORT MOTOR - PUMP DIN5463 (UNI) (SMPUNI) is an assembly which allows the transmission of hydraulic power from the tractor to the hydraulic circuit in question, to operate the tipper trailer.
- SMPUNI allows an optimal coupling between pump and motor, this coupling is obtained through a tube where it is possible to connect both UNI flanges.
- With the SMPUNI it is not necessary to use the cardan shaft to make the connection to the tipper trailer. This allows greater safety and enhanced maneuverability of the vehicle without affecting its performance.
- All ABER pumps and motors with DIN 5463 (UNI) flange can be fixed to this support.

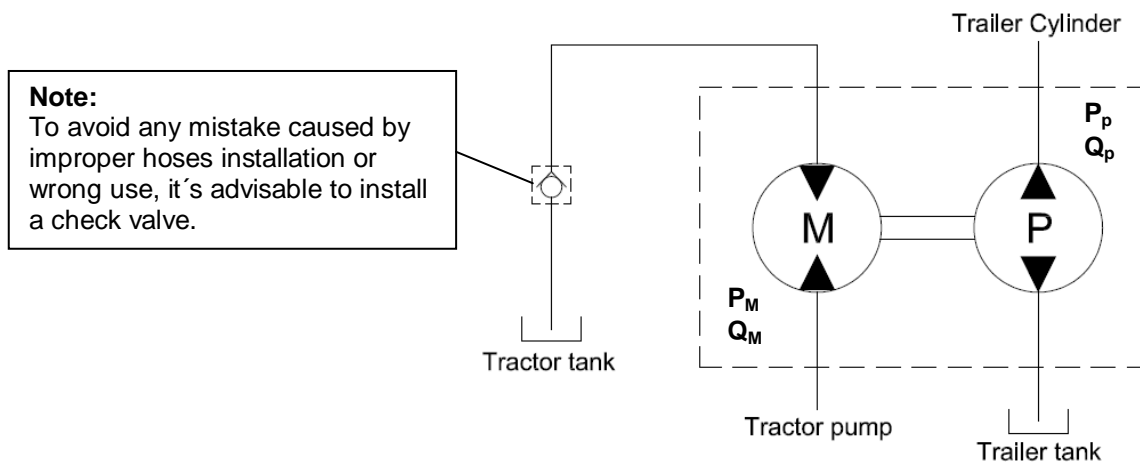
CTI SMPUNI 1411-0

ABER is constantly engaged in improving its products and, therefore, reserves itself the right to modify without any further notice the characteristics shown

## Motor/Pump Assembly



## Motor/Pump Hydraulic Scheme



$P_M$  – Inlet motor pressure (same as tractor pump pressure)

$Q_M$  – Inlet motor flow (same as tractor pump flow)

$P_p$  – Pump pressure (same as cylinder pressure)

$Q_p$  – Pump flow (same as cylinder flow)