



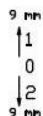
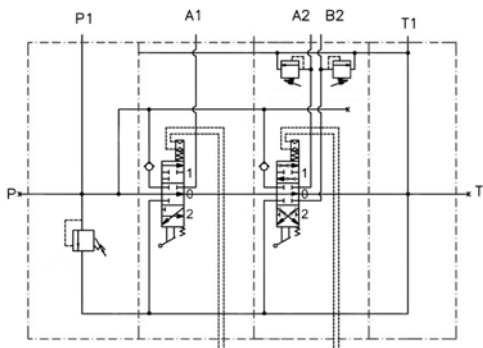
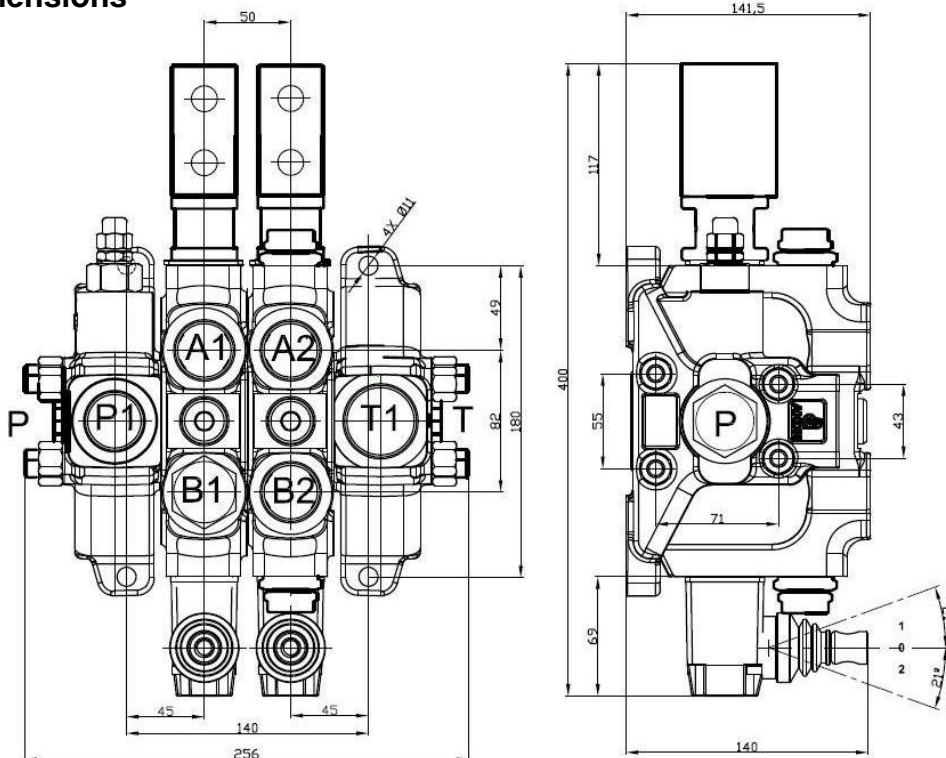
SECTIONAL DIRECTIONAL CONTROL VALVES

Ref. DTS15020

DT

Open Circuit 150L

Main Dimensions



SPOOL MOVEMENT

A – Outlet G3/4”
 B – Pull Stroke End G3/4”
 P – Pump G3/4”
 T– Descent G1”

(Dimensions in mm)

- High strength cast iron
- Hard chrome plated interchangeable
- Steel spring caps
- Aluminium lever caps
- NBR seals
- Parallel circuit
- Adjustable main relief valve
- Load hold check valve in each section
- Double action

Main Data

A1 Operating pressure (bar)	up to 180
A2 / B2 Operating pressure (bar)	up to 130
A1 Flow rate (l/min)	150
A2 / B2 Flow rate (l/min)	20
Weight (kg)	21,8

CTI DTS15020 1105-0

ABER is constantly engaged in improving its products and, therefore, reserves itself the right to modify without any further notice the characteristics shown

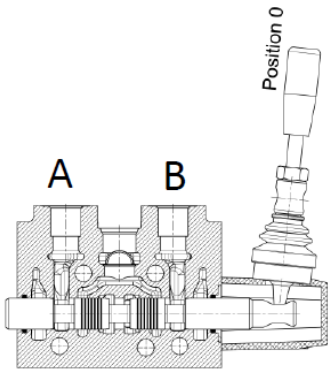


Rua Francisco de Almeida, Nº 30 – Vila Nova da Telha – 4470 MAIA - Portugal
 Telephone: +351.22.9438070 Fax: +351.22.9420823 e-mail: aber@aber.pt <http://www.aber.pt>

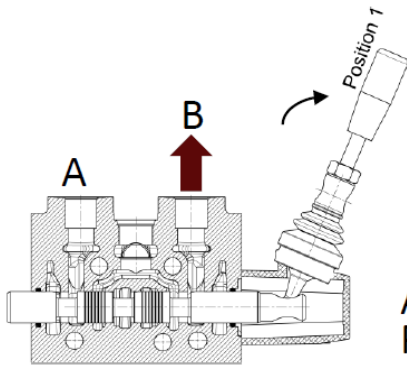


SECTIONAL DIRECTIONAL CONTROL VALVES		Ref. DTS15020
DT	Open Circuit 150L	

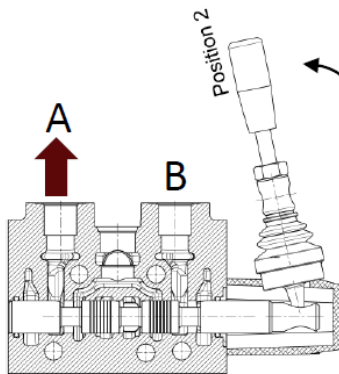
Spool Control Positions



Spool-neutral position;
POSITION 0



Spool-out position;
POSITION 1



Spool-in position;
POSITION 2

CTI DTS15020 1105-0

ABER is constantly engaged in improving its products and, therefore, reserves itself the right to modify without any further notice the characteristics shown



Rua Francisco de Almeida, Nº 30 – Vila Nova da Telha – 4470 MAIA - Portugal
 Telephone: +351.22.9438070 Fax: +351.22.9420823 e-mail: aber@aber.pt <http://www.aber.pt>