



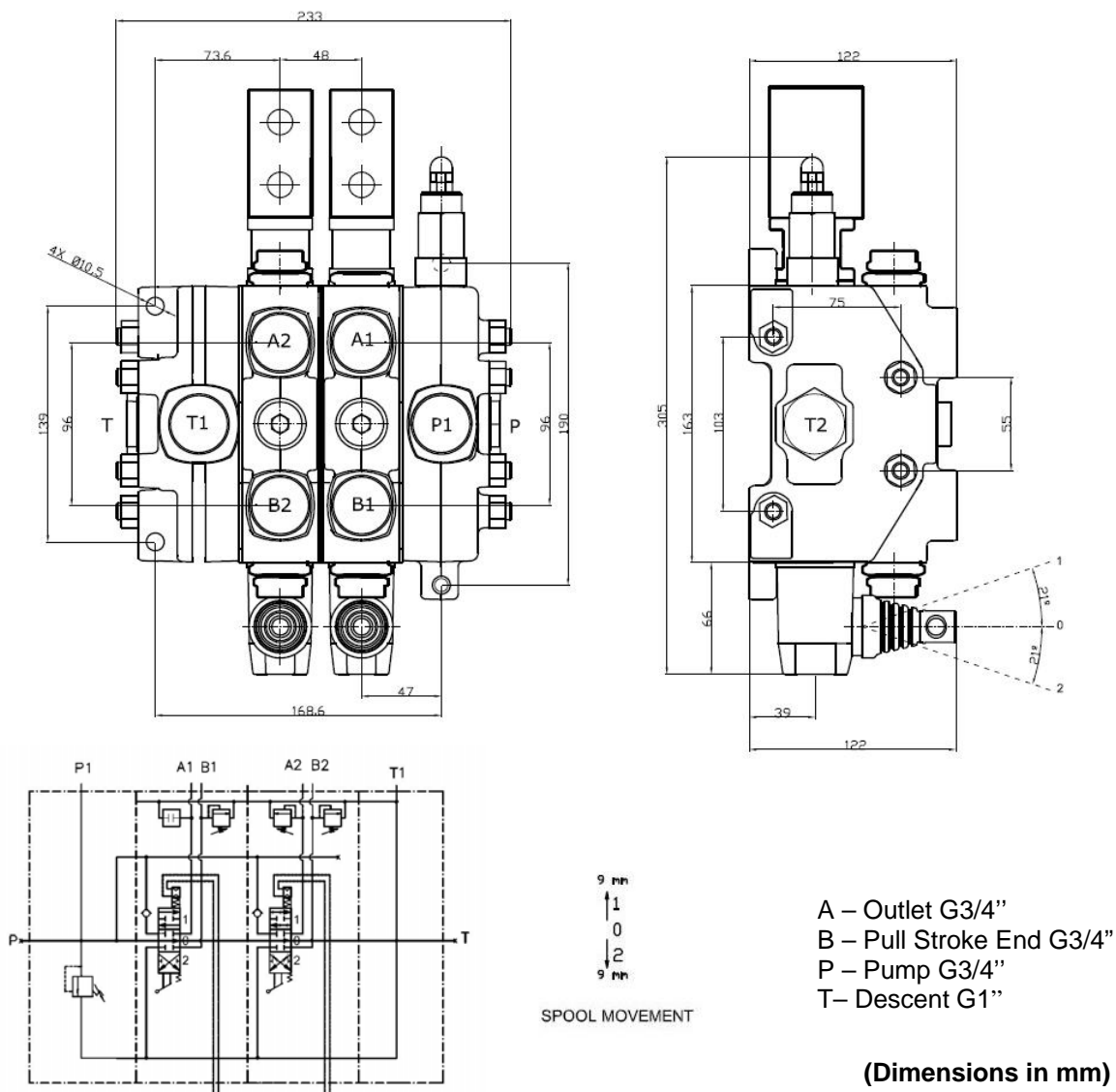
SECTIONAL DIRECTIONAL CONTROL VALVES

Ref. DTS10020

DT

Open Circuit 100L

Main Dimensions



(Dimensions in mm)

- High strength cast iron
- Hard chrome plated interchangeable
- Steel spring caps
- Aluminium lever caps
- NBR seals
- Parallel circuit
- Adjustable main relief valve
- Load hold check valve in each section
- Double action

Main Data

A1 / B1 Operating pressure (bar)	up to 350
A2 / B2 Operating pressure (bar)	up to 130
A1 Flow rate (l/min)	100
A2 / B2 Flow rate (l/min)	20
Weight (kg)	20

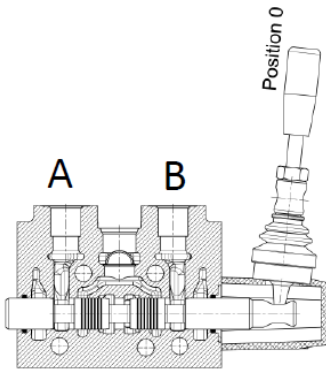
ABER is constantly engaged in improving its products and, therefore, reserves itself the right to modify without any further notice the characteristics shown



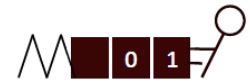
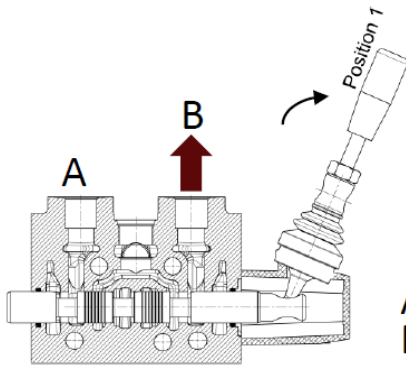
Rua Francisco de Almeida, Nº 30 – Vila Nova da Telha – 4470 MAIA - Portugal
 Telephone: +351.22.9438070 Fax: +351.22.9420823 e-mail: aber@aber.pt <http://www.aber.pt>



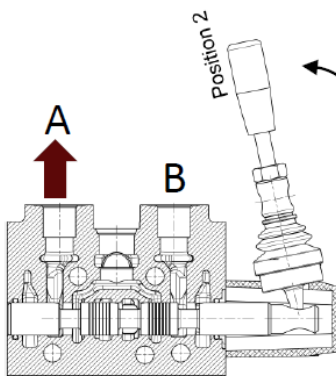
Spool Control Positions



Spool-neutral position;
POSITION 0



Spool-out position;
POSITION 1



Spool-in position;
POSITION 2

CTI DTS10020 1105-0

ABER is constantly engaged in improving its products and, therefore, reserves itself the right to modify without any further notice the characteristics shown

